

Smartsheet for Construction

Overview

From pre-construction to closeout, Smartsheet connects your office and field teams, sub-contractors, consultants, and inspectors giving you real-time insights into the work that's being done. With complete project visibility, you can reduce safety hazards, create clear ownership, reduce redundancies, and build more accurate schedules.

Smartsheet integrates with Procore and Primavera P6*, as well as the communication tools your team prefers. It has an intuitive interface that doesn't require extensive training, leading to rapid adoption and more meaningful data collection — helping you complete projects on-time, on-budget, and with zero defects or safety incidents.



Boost Construction Team Collaboration

Improve on-site documentation by capturing issues in real-time, increase communication among planners, designers, construction teams, vendors, and clients, and save time with resource management in a single source of truth.



Access Real-Time Data Anywhere

Collect consistent data, reduce testing and inspection errors, and accelerate close-out time with simple forms that crews can access from the field via their mobile device.



Automate Schedules and Work

Experience zero defects with intuitive scheduling and automation that results in more projects finishing as planned.



Deploy, Integrate, and Scale

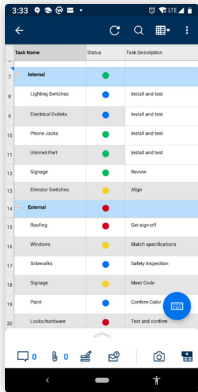
Grow your business without outgrowing your technology or your wallet - with quick-start solutions for your construction management projects.



Visibility Into What Matters Most

Reports and dashboards provide real-time visibility across construction projects to ensure resources are allocated efficiently, projects are on time and delivering the expected profits. Quickly identify urgent items so teams can rapidly adapt and keep tasks on schedule.

Key Benefits

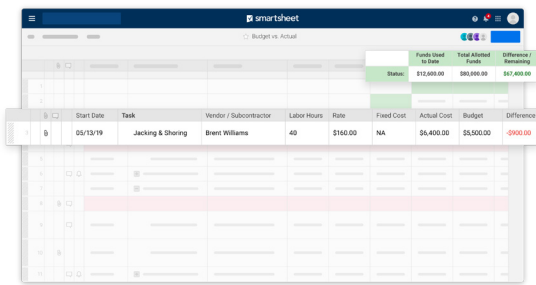


Collaboration

From design to closeout, Smartsheet ensures frictionless sharing with stakeholders. Project managers, designers, and owners rely on updates from the field team to understand real-time status and quickly adjust plans if needed.

“Smartsheet has made conversations easier. It’s a lot more clear to people what they need to work on and has opened up those lines of communication.”

- Kendall Pouland, Director of Professional Development, Tellepsen



Budget Tracking and Benchmarking

Connect planned and actual spend with team activity, track to targets, manage bids and change order requests, and maintain visibility into project budgets.

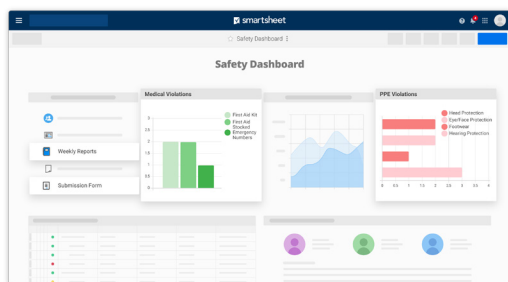
“We track sales, production, and client billing in Smartsheet. We also use Smartsheet as our global storage for job-costing receipts ... and for tracking renovation on multiple apartment complexes, in many locations. Management can see updated unit info from their laptop or phone without having to visit the site.”

Easier to Use, Faster Time-to-Value

Constructing a building, bridge, or road requires hard work. Using your work management platform shouldn't. With a familiar interface, integrations with Procore and Primavera P6, and a free collaborator model, you can quickly garner broad adoption.

“By using Smartsheet, 47% of users in the construction industry report saving at least six hours every week.”

- 2018 TechValidate Survey



Contact us

- ✉ sales@smartsheet.com
- ☎ (844) 324-2360
- 🌐 smartsheet.com

Follow us

- 📘 /smartsheet
- 🌐 /company/smartsheet-com
- 📺 /smartsheet
- 📧 /@smartsheet