

Smartsheet for Energy & Utilities

Overview

Energy and utilities companies trust Smartsheet to unite their distributed workforces. Smartsheet is used to improve decision making, increase speed, facilitate collaboration, drive visibility and even enable field workers to communicate updates with their home office.

Smartsheet ensures that everyone has the right information and can increase traceability around responsibilities, such as work orders, recurring preventative maintenance, and safety inspections. The visibility gained by using Smartsheet helps to surface project and program tasks, real-time field metrics, and progress, so the home office is in the best possible position to support these ongoing efforts.

How Does Smartsheet Help My Organization?

Energy and utilities professionals rely on Smartsheet to plan and deliver with accuracy and speed.



Recurring Preventative Maintenance

Track ongoing tasks with reminders in order to minimize emergency repairs.



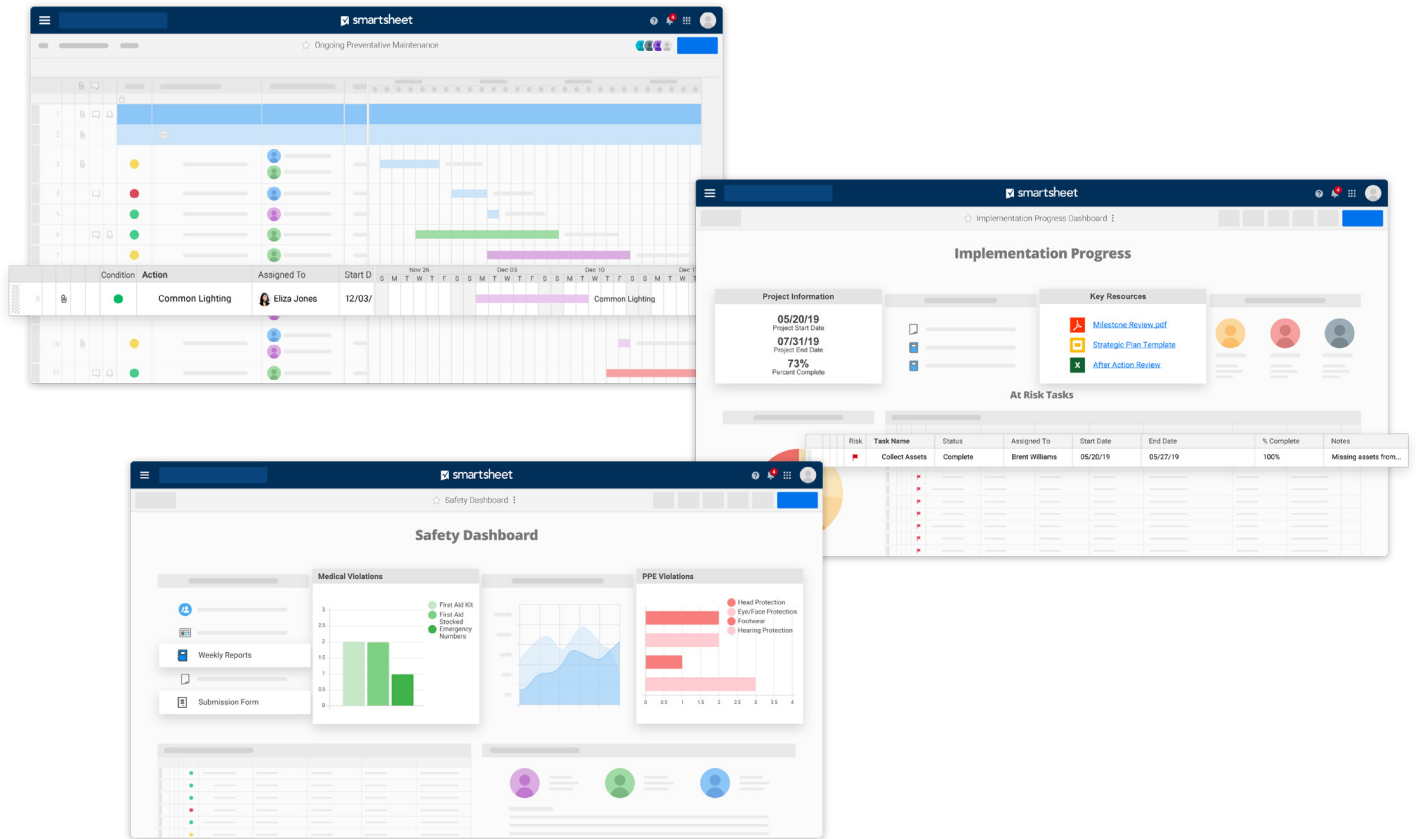
Program Roll Up

Enhance program visibility with real-time field metrics that summarize progress across projects, and increase stakeholder confidence and trust.



Safety

Increase inspection accuracy, speed, and traceability. Accelerate resolution by connecting the right people at the right time.



Key Benefits



Visibility

Self-service reports and dashboards provide real-time visibility into resources, status, and performance, so you can rapidly align operations to strategy.



Flexible Control

Smartsheet gives you complete control to make changes or enforce structure for your collaborative work — no coding required.



Simplicity

Smartsheet's familiar interfaces, designed for how people really work, lead to rapid and broad adoption across your organization.



Mobile

Get real-time access to Smartsheet and seamlessly view and update data, wherever you are, with your mobile device or tablet.