

Smartsheet for Professional Services

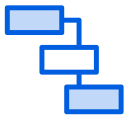
Overview

Professional services teams need work management solutions to enable them to deliver great results to both internal and external clients. After all, supporting client relationships requires that professional services teams have streamlined processes that help them achieve and exceed their goals.

Smartsheet helps professional services teams establish a culture of trust with their clients through real-time visibility into project statuses, enhanced collaboration, and simplified processes. Teams choose Smartsheet to handle client onboarding, request management, and overall project management for their clients.

How Does Smartsheet Help My Organization?

Manufacturers count on Smartsheet for real-time visibility that helps drive operational efficiency.



Manage Client Projects

Smartsheet provides collaborative work transparency that keeps clients and collaborators aligned.



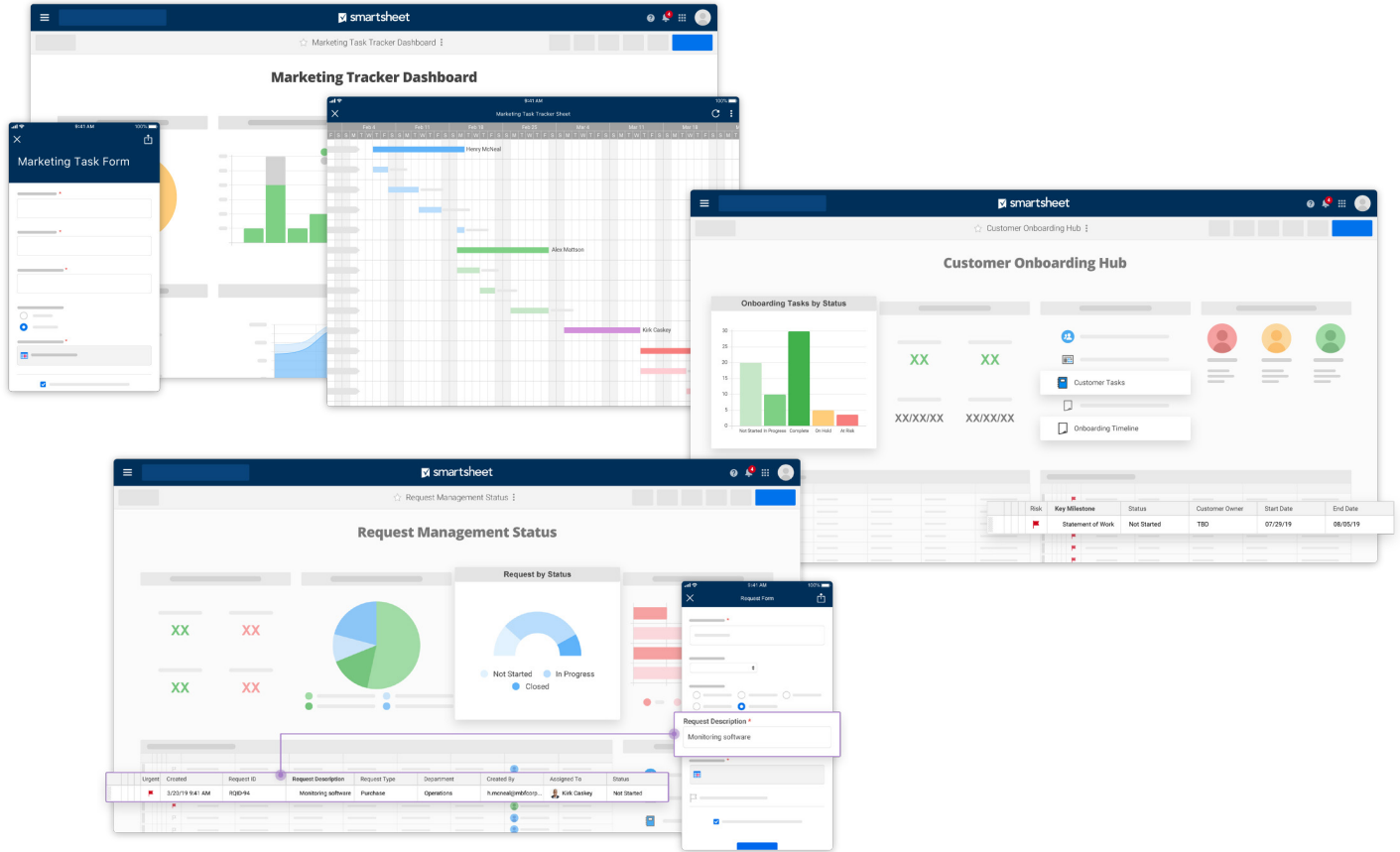
Client Onboarding

Ensure that your client engagements start quickly and smoothly using seamless intake requests and informative resource portals.



Request Management

Receive requests from external stakeholders across devices and centralize response delivery.



Key Benefits



Visibility

Self-service reports and dashboards provide real-time visibility into resources, status, and performance, so you can rapidly align operations to strategy.



Flexible Control

Smartsheet gives you complete control to make changes or enforce structure for your collaborative work — no coding required.



Simplicity

Smartsheet's familiar interfaces, designed for how people really work, lead to rapid and broad adoption across your organization.